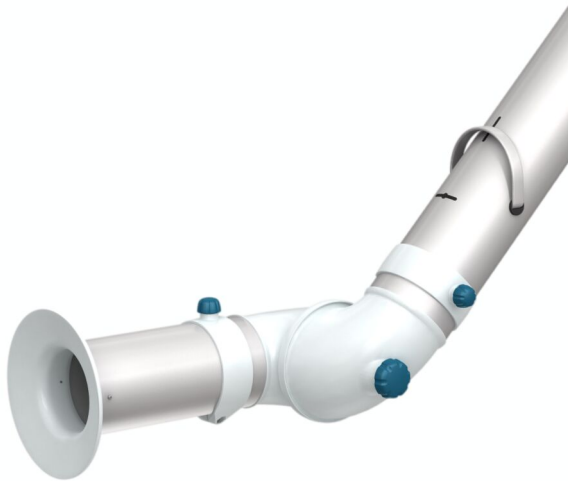


BenchTop Extraction Arm FX2 75 Original

The best and most cost-efficient solution for applications where small, flexible and easy-to-use arms are required.











Nederman FX2 arms are made of lightweight anodized aluminium sections, with three adjustable, composite friction joints. Offering strength and durability combined with easy handling, they can be used in many types of environment. They are especially suitable for applications where small, flexible and easy-to-use arms are required. A robust and reliable all-round arm for general applications where there is little risk of electrical discharges or attack by aggressive chemicals.

- Optimal efficiency and low noise provides safe and quiet working environment
- Ceilings, walls and floors or fixed to worktops mountings and cut2fit extension profile gives maximum installation flexibility
- The two outermost arm joints can rotate and swivel through 360°, which gives the unique maneuverability
- The lean, smooth and aesthetic design allows arms to fit in well in any environment without compromising its durability and reliability
- Highly integrated products that save customers' time and costs, as well as providing the reliability and functionality to deliver a better performance

| | |
|------------------------------|--|
| Product name | BenchTop Extraction Arm FX2 75 Original |
| Noise level (dB(A)) | 58 dB(A) at 140 cfm |
| Installation | [Indoor] |
| Material | Tubes in anodized aluminium. Joints in PP plastic. Duct connectors in EPDM rubber. Minihood in PP plastic. |
| Fume temperature | max 70°C |
| Extraction arm diameter (in) | 3 in. |
| Airflow (CFM) | 65 cfm - 150 cfm |
| Colour | Aluminum and white |



BenchTop Extraction Arm FX2 75 Original

| [image] | Description | Arm length (ft) | Weight (lbs) | [model] |
|---|---------------------------------|-----------------|--------------|--------------|
|  | FX2-ORIG-D75-L1100-Up-Low | 1,1 | 7.0 lbs | 70602344* |
|  | FX2-ORIG-D75-L1100-Up-PLUS | 1,1 | 9.9 lbs | 70602444** |
|  | FX2-ORIG-D75-L1100-Down-Low | 1,1 | 7.0 lbs | 70602544*** |
|  | FX2-ORIG-D75-L1100-Down-Through | 1,1 | 5.7 lbs | 70602644**** |
|  | FX2-ORIG-D75-L1500-Up-Low | 1,5 | 7.5 lbs | 70602744* |
|  | FX2-ORIG-D75-L1500-Up-PLUS | 1,5 | 10.4 lbs | 70602844** |
|  | FX2-ORIG-D75-L1500-Down-Low | 1,5 | 7.5 lbs | 70602944*** |
|  | FX2-ORIG-D75-L1500-Down-Through | 1,5 | 6.2 lbs | 70603044**** |

*Up-Low

**Up-PLUS

***Down-Low

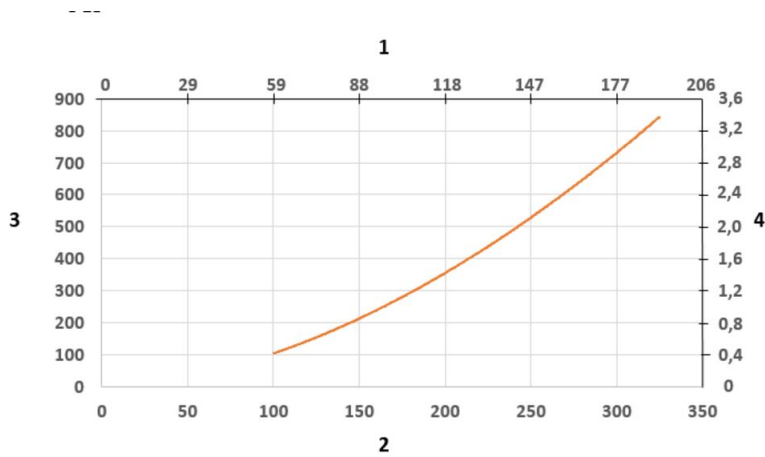
****Down-Through

BenchTop Extraction Arm FX2 75 Original

| | [accessory] | [partno] |
|--|-------------------------------------|----------|
| | FX-Bracket kit-D50/75/100-L190 | 70501144 |
| | FFX2-Bracket kit-D50/75/100-L500 | 70377042 |
| | FX2-Wall BRKT kit-Flat-L190-White | 70377043 |
| | FX2-Wall-P BRKT kit-D50/75/100-L190 | 70377046 |
| | FX2-Bench bracket kit-D50/75/100 | 70501444 |
| | FX-Classic bracket-D50/75/100 | 70501244 |
| | FX-Cut2fit extension-L1100. | 70501344 |
| | FX-Cut2fit extension-L2200 | 70374600 |
| | FX-Ceiling cover plate | 70502644 |
| | FX2-Ceiling cover plate-PLUS | 70377045 |
| | FX-Combi hood-ORIGINAL-D50/75/100 | 70500144 |
| | FX-Dome hood-ORIGINAL-D50/75/100 | 70376982 |
| | FX-Metal hood-ORIG/CHEM-D50/75/100 | 70500444 |
| | FX-Flange hood-ORIGINAL-D50/75/100 | 70502844 |
| | FX2-Al duct-L1000-D75/100toD100 | 70377058 |
| | FX2-Al duct-L2000-D75/100toD100 | 70377059 |
| | FX-Hose-D75-L3000-Grey | 70377098 |
| | FX-Hose-D100-L3000-Grey | 70377099 |
| | FX2-Hose support ring-D75 | 70377067 |
| | FX2-Hose support ring-D100 | 70377068 |
| | FX2-Duct connector-ORIG/CHEM-D75 | 70377038 |
| | Hardware Kit for Up-Plus Arms | 89299228 |

BenchTop Extraction Arm FX2 75 Original

BenchTop Extraction Arm FX2 75 Original



Pressure Drop diagram:

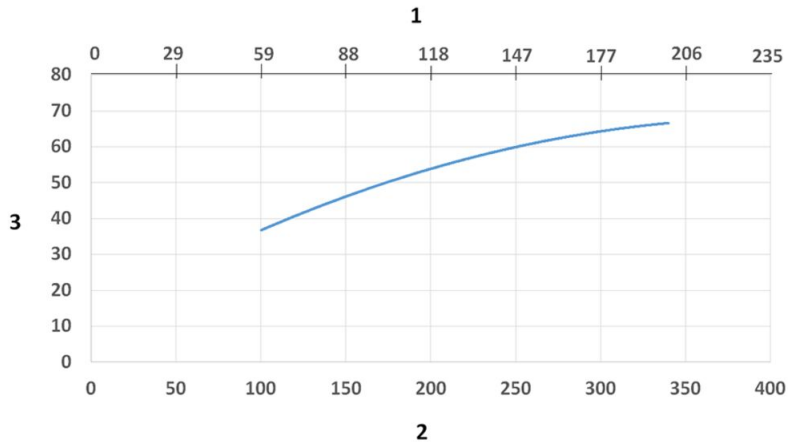
1) X- Axis: Air Flow Rate (cfm)

2) X- Axis: Air Flow Rate (m/h)

3) Y- Axis: Static Pressure Drop (Pa)

4) Y- Axis: Static Pressure Drop (in. wg.)

BenchTop Extraction Arm FX2 75 Original



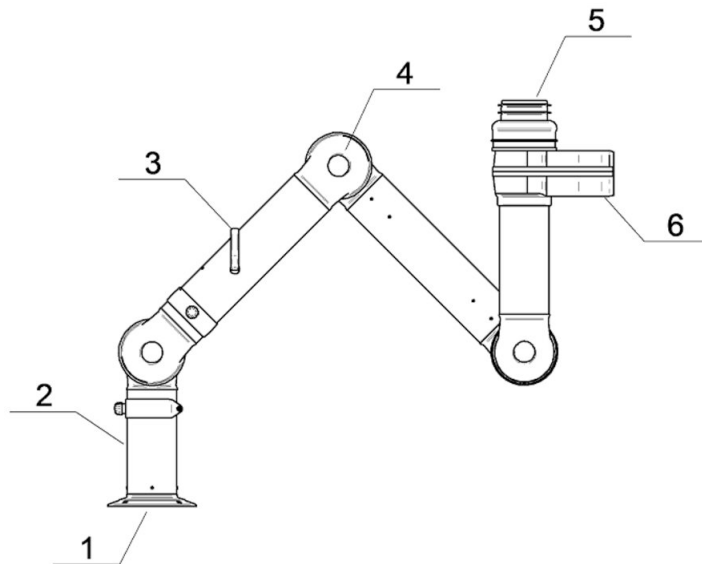
Sound Level diagram:

1) X- Axis: Air Flow Rate (cfm)

2) X- Axis: Air Flow Rate (m/h)

3) Y- Axis: Sound Pressure Level (dB) (A)

BenchTop Extraction Arm FX2 75 Original



Material:

1) Flange: PP

2) Tubes: Aluminum, anodized 10 µm

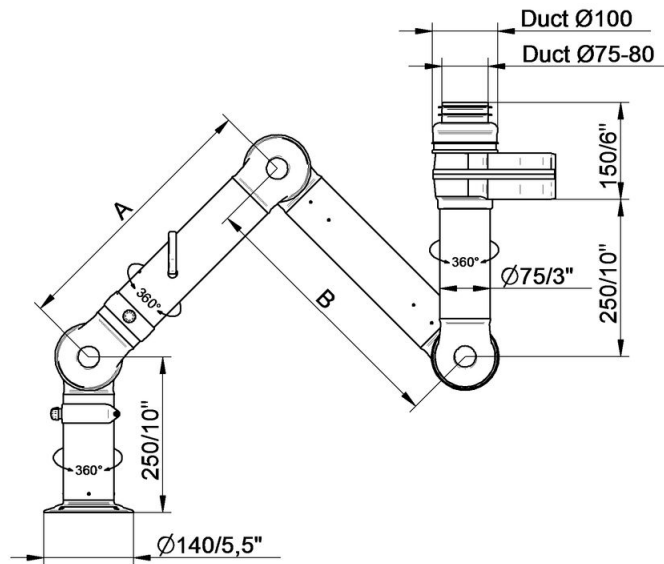
3) Damper adjustment handle: Aluminum, anodized 10 µm
Internal spring: Stainless steel
Damper blade: Conductive TP & PP plastic

4) Joints: PP with glass fibre reinforcement
Plastic rings: PP with glass fibre reinforcement
Axial locking rings: PP with glass fibre reinforcement
Adjustment knobs: PA & EDS plastic
Threaded shaft inside joints: Stainless Steel

5) Duct connector: EPDM Rubber

6) Swivel: Aluminum, powder coating
Rivets: Aluminum
Bearings swivel: PP plastic with glass fibre reinforcement

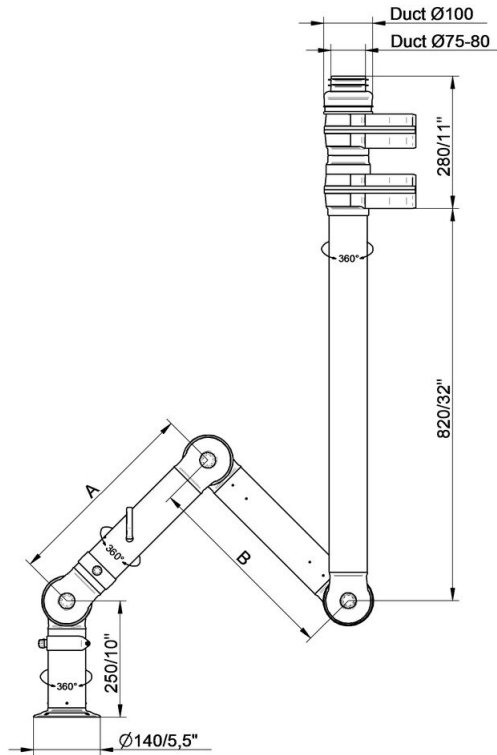
BenchTop Extraction Arm FX2 75 Original



- FX2-ORIG-D75-L1100-Up-Low
Part number: 70602344
Max. working radius: 1090 mm (42,9 in)
A: 420 mm (16,5 inch)
B: 420 mm (16,5 inch)

- FX2-ORIG-D75-L1500-Up-Low
Part number: 70602744
Max. working radius: 1450 mm (57,1 in)
A: 500 mm (19,7 in)
B: 700 mm (27,5 in)

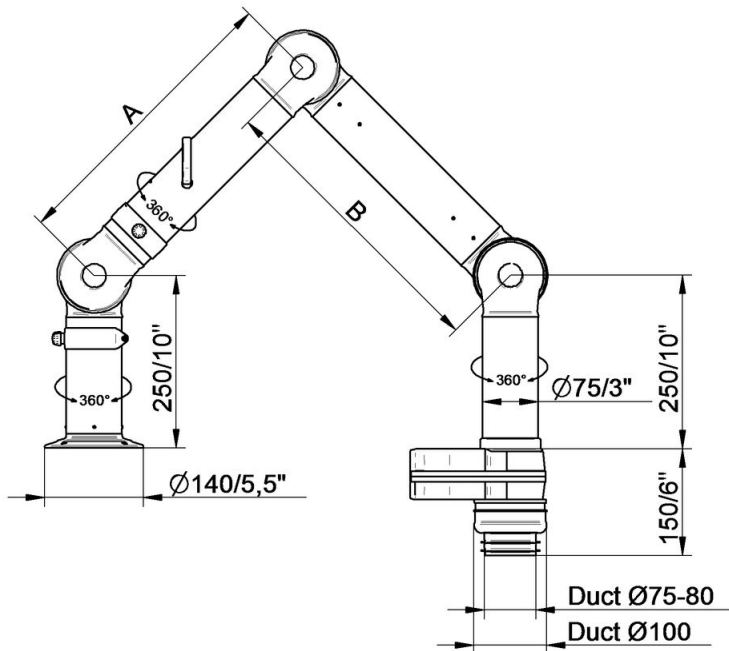
BenchTop Extraction Arm FX2 75 Original



FX2-ORIG-D75-L1100-Up-PLUS
Part number: 70602444
Max. working radius: 1090 mm (42,9 in)
A: 420 mm (16,5 in)
B: 420 mm (16,5 in)

• FX2-ORIG-D75-L1500-Up-PLUS
Part number: 70602844
Max. working radius: 1450 mm (57,1 in)
A: 500 mm (19,7 in)
B: 700 mm (27,5 in)

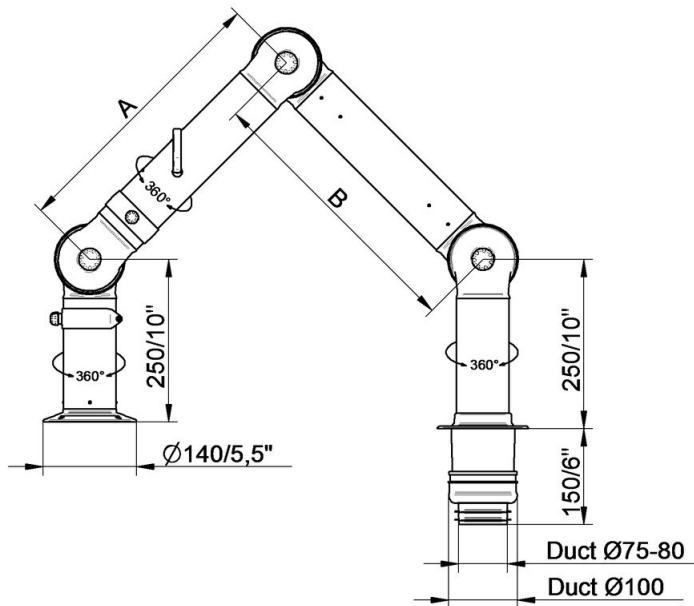
BenchTop Extraction Arm FX2 75 Original



- FX2-ORIG-D75-L1100-Down-Low
Part number: 70602544
Max. working radius: 1090 mm (42,9 in)
A: 420 mm (16,5 in)
B: 420 mm (16,5 in)

- FX2-ORIG-D75-L1500-Down-Low
Part number: 70602944
Max. working radius: 1450 (57,1 in)
A: 500 mm (19,7 in)
B: 700 mm (27,5 in)

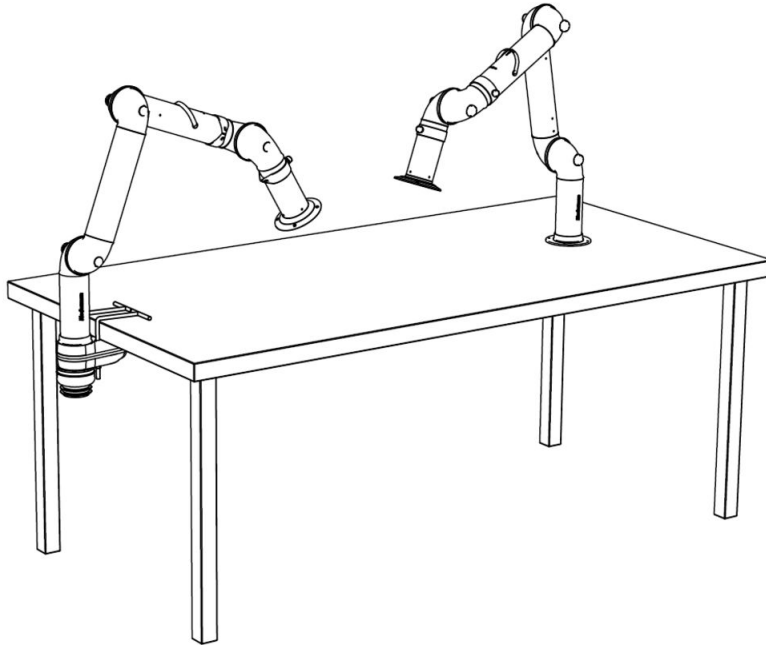
BenchTop Extraction Arm FX2 75 Original



- FX2-ORIG-D75-L1100-Down-Through
Part number: 70602644
Max. working radius: 1090 mm (42,9 in)
A: 420 mm (16,5 in)
B: 420 mm (16,5 in)

- FX2-ORIG-D75-L1500-Down-Through
Part number: 70603044
Max. working radius: 1450 mm (57,1 in)
A: 500 mm (19,7 in)
B: 700 mm (27,5 in)

BenchTop Extraction Arm FX2 75 Original



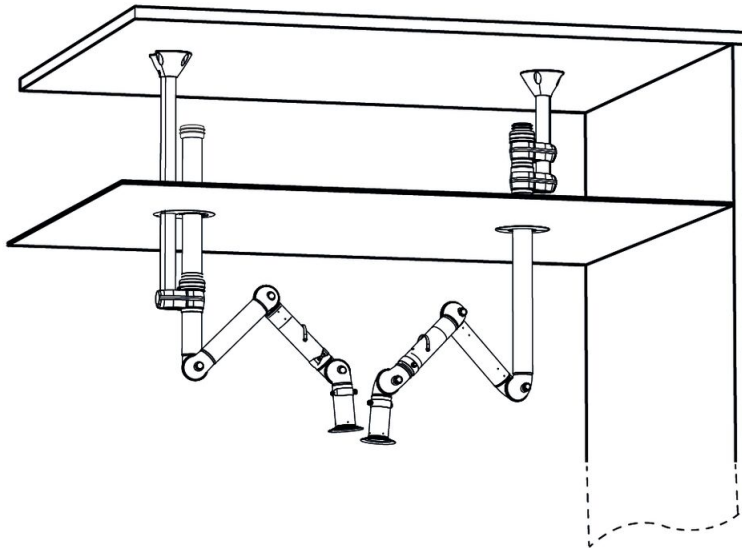
Bench mounting examples:

Left: FX2-Down-Low arm with following accessories:

-FX2-Bench bracket kit-D50/75/100

Right: FX2-Down-Through arm

BenchTop Extraction Arm FX2 75 Original



Ceiling mounting example:

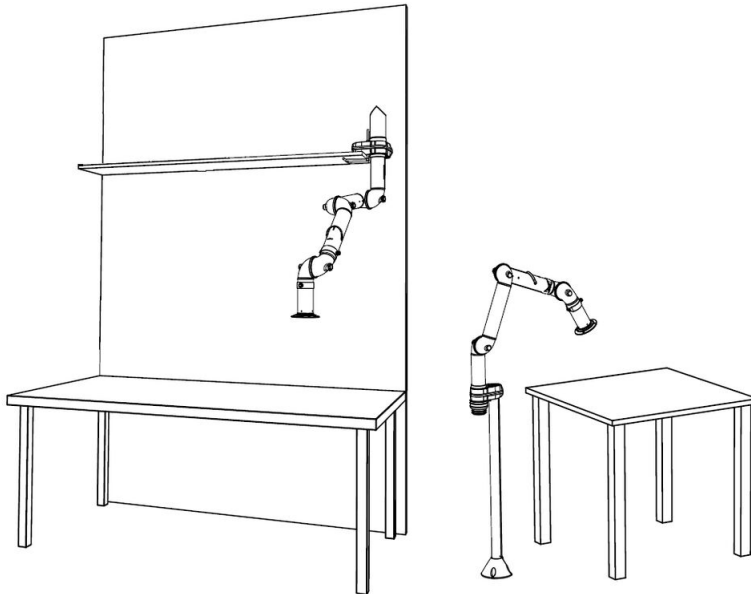
Left: FX2-Up-Low arm with following accessories:

- FX-Classic bracket
- FX-Cut2fit extension-L1100
- FX2-Alu duct
- FX2-Duct connector-ORIG/CHEM-D100
- FX-Ceiling cover plate

Right: FX2-Up-PLUS arm with following accessories:

- FX2-Bracket kit-D50/75/100-L500
- FX2-Ceiling cover plate-PLUS

BenchTop Extraction Arm FX2 75 Original



Other mounting examples:

Left: Shelf mounting with FX2-Up-Low arm and following accessories:

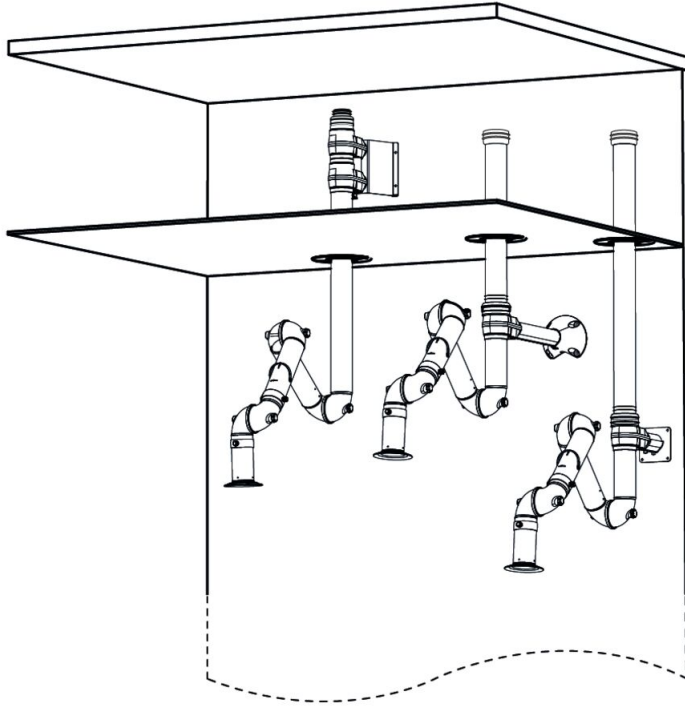
-FX2-Bench bracket kit

Right: Floor mounting with FX2-Up-Low arm and following accessories:

-FX-Classic bracket

-FX-Cut2fit extension-L1100

BenchTop Extraction Arm FX2 75 Original



Wall mounting examples:

Left: FX2-Up-PLUS arm with following accessories:

- FX2-Wall-P BRKT kit-D50/75/100-L190
- FX2-Ceiling cover plate-PLUS

Middle: FX2-Up-Low arm with following accessories:

- FX2-Bracket kit-D50/75/100-L500
- FX2-Ceiling cover plate-PLUS
- FX2-Alu duct
- FX2-Duct connector-ORIG/CHEM-D100

Right: Up-Low arm with following accessories:

- FX2-Wall BRKT kit-Flat-L190-White
- FX2-Ceiling cover plate-PLUS
- FX2-Alu duct
- FX2-Duct connector-ORIG/CHEM-D100